



THERE  
ARE TWO  
GIFTS  
WE SHOULD  
GIVE OUR  
CHILDREN

ONE  
IS  
ROOTS  
AND THE  
OTHER IS  
WINGS



Our School was founded to give children of the South West access to a high-quality education, without the need to leave the region. Our foundations were built through the generosity of our founding families and, in particular, the drive and determination of Bishop Hawkins to see the School established.

Many who were instrumental in establishing the School and ensuring its success, are acknowledged throughout our campus with buildings and plaques. However, it was the commitment and generosity of the School community in its entirety which has allowed us to educate children of the South West for the last 50 years.

Our community donated time, energy, equipment, and money to build the wonderful campus that our students enjoy today. Launched in 2007, our Annual Giving program provides all members of our community the opportunity to continue to contribute to our growth.

This year we commence Stage One of the new Masterplan. As we plan the journey for our next 50 years, we aim to rebuild and reimagine our buildings and learning spaces to ensure our students continue to be educated in the best facilities by the best staff.

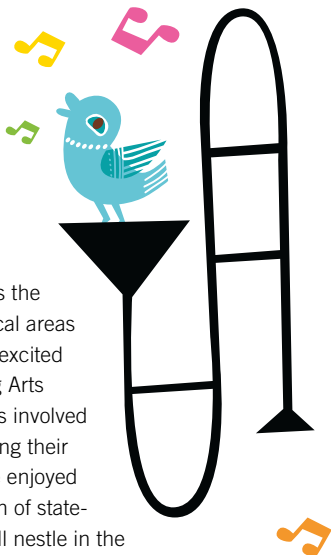
I acknowledge and thank those who have helped us get where we are today. I invite you to continue the tradition of giving started in 1972. Annual Giving for 2021 provides an opportunity for you to contribute to projects that support our students in the areas we know make a difference. Each contribution, no matter how big or small, makes a very real difference. I acknowledge the generosity of all in our community and look forward to working with you to rebuild and reimagine our School for the future.

**Mr Matthew O'Brien :: Head of School**



①

## MUSIC, TWEET MUSIC



The School Foundation supports the continued upgrade to the physical areas of the Campus. In 2021 we are excited to be developing our Performing Arts Precinct. With all of our students involved in music or performing arts during their time at School, many of us have enjoyed their performances. The addition of state-of-the-art music studios, that will nestle in the Highway Oval treescape, will provide our aspiring musicians and performers with additional facilities to develop their talents. The School envisions four studios above the Highway oval, with the installation of three already underway. Each contribution towards this project will move us closer to making this vision a reality.

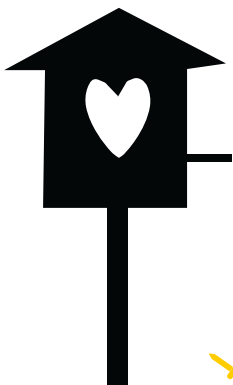
③

## EVERYONE IS A READER...



...some just have not found their favourite book yet!

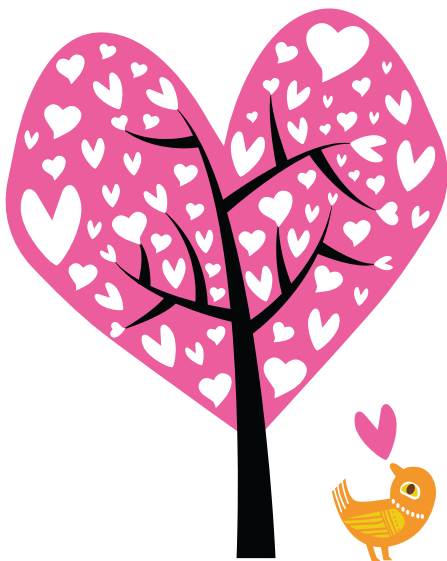
The Lishman Library is in the heart of our School, providing a safe and welcoming place for both Primary and Secondary students. The growing and inquisitive minds of students need a library that can help them find the answer or explore a new place... real or otherwise! A contribution of \$100 would put five new books on the shelves and a contribution of \$1,000 would support a visiting author to work with our students.



Our students are a creative bunch, with their talents on display each year at the Annual Art and Technology Exhibition. In 1997, our Design and Technology centre opened with a cutting-edge Woodwork/Metalwork workshop. Due to the strong interest in these subjects we will expand this area to provide our students with more space and improved equipment. Our community can leave a permanent mark in this space, by contributing to the purchase of industrial equipment that will help develop the skills of our students that can be utilised in future trade and employment opportunities. Just two contributions of \$5,000 will enable the purchase of a modern metal lathe.



The key to any type of growth in life is learning. We aim to instil a love of learning in our students, paving the way for a lifelong journey of growth and development. We know that not everyone who loves to learn is able to afford to join our School. To provide one full Secondary Scholarship, more than \$100,000 is required, or 50 annual donations of \$2,000. By contributing to the Scholarship fund, families support the School Foundation in providing every opportunity for students from all walks of life to benefit from a Bunbury Grammar education.



---

*Strong foundations  
building our Future*

---

It is through the past generosity of our School community that we enjoy excellent resources and facilities today. We wish to thank each and every donor for their contribution to our School.



**BUNBURY CATHEDRAL GRAMMAR SCHOOL**  
5 Allen Rd, Gelorup, Western Australia 6230  
Ph (08) 9722 6000 | [www.bcgs.wa.edu.au](http://www.bcgs.wa.edu.au)

## I/WE WISH TO CONTRIBUTE TOWARDS:

- ① Performing Arts Precinct
- ② Metalwork Workshop
- ③ Lishman Library
- ④ Scholarships  General  Indigenous

with  \$100  \$200  \$500  \$1,000  
 \$5,000  \$ \_\_\_\_\_

via **Online** [www.bcgs.wa.edu.au/donation](http://www.bcgs.wa.edu.au/donation)

or **Cheque**  **Performing Arts and Metalwork workshop**  
Payable to:  
*'Bunbury Cathedral Grammar School Foundation'*

**Scholarships and Lishman Library**  
Payable to: *'Bunbury Cathedral Grammar School'*

or **Credit Card**  Visa  Mastercard

Name \_\_\_\_\_

Card N° \_\_\_\_\_ / \_\_\_\_\_ / \_\_\_\_\_ / \_\_\_\_\_

Exp Date \_\_\_\_ / \_\_\_\_

Signature \_\_\_\_\_

Name(s) \_\_\_\_\_

Address \_\_\_\_\_  
\_\_\_\_\_

Phone \_\_\_\_\_

**I DO NOT** want my name published in the *Grammarian*.

*All donations are gratefully accepted and are tax deductible. To claim the tax deduction in the 2020/2021 financial year, you may wish to make your gift prior to 30 June 2021.*

## LEAVE A LEGACY!

Perhaps you would like to show support for the School in the future without impacting your current financial situation?

I would like to receive a **Bequest Brochure**